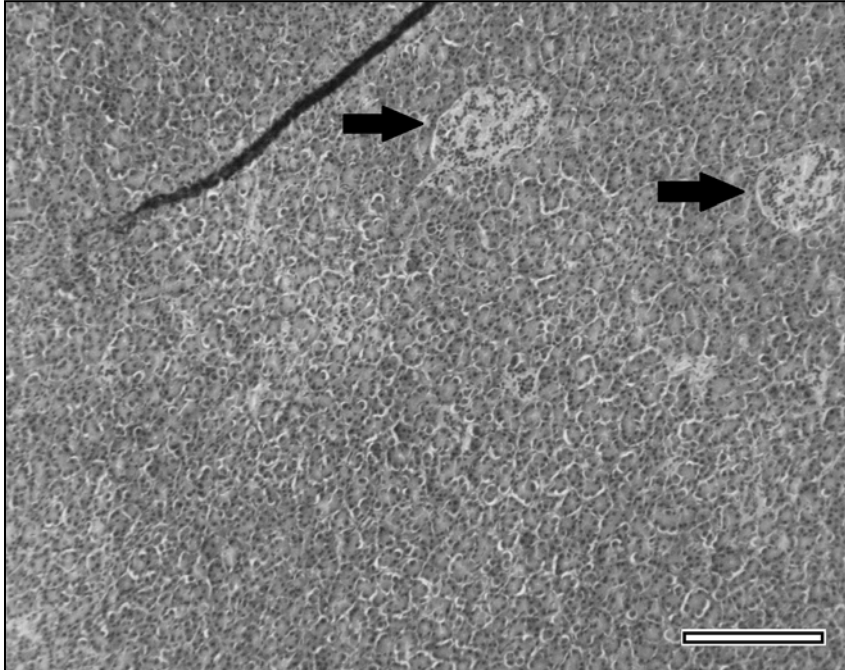


**Supplemental Figure S1.** Hematoxylin-eosin-staining (HE staining) of a dissected and processed pancreatic sample of an optimal (BCS $\leq$ 3.5; panel A) and an overconditioned cow (BCS $>$ 3.5; panel B). Scale bar = 200  $\mu$ m. This staining was used to evaluate the pancreatic islets (indicated with arrows) between the darker stained pancreatic exocrine tissue and adipocytes (indicated with the asterisk).

**A.**



**B**

