

Supplemental Table S1. Fixed inputs for the stochastic analysis to calculate the average cost of metritis

Item	Metritis	No Metritis
Milk production (kg/cow)	9,463.0	10,277.0
DMI (kg/cow)	5,769.7	6,227.1
Cows sold (%)	31.3	23.6
Cows culled (%)	35.9	26.5
Cows with reproduction cost (%)	92.3	95.1
Cows not culled (%)	64.1	73.5

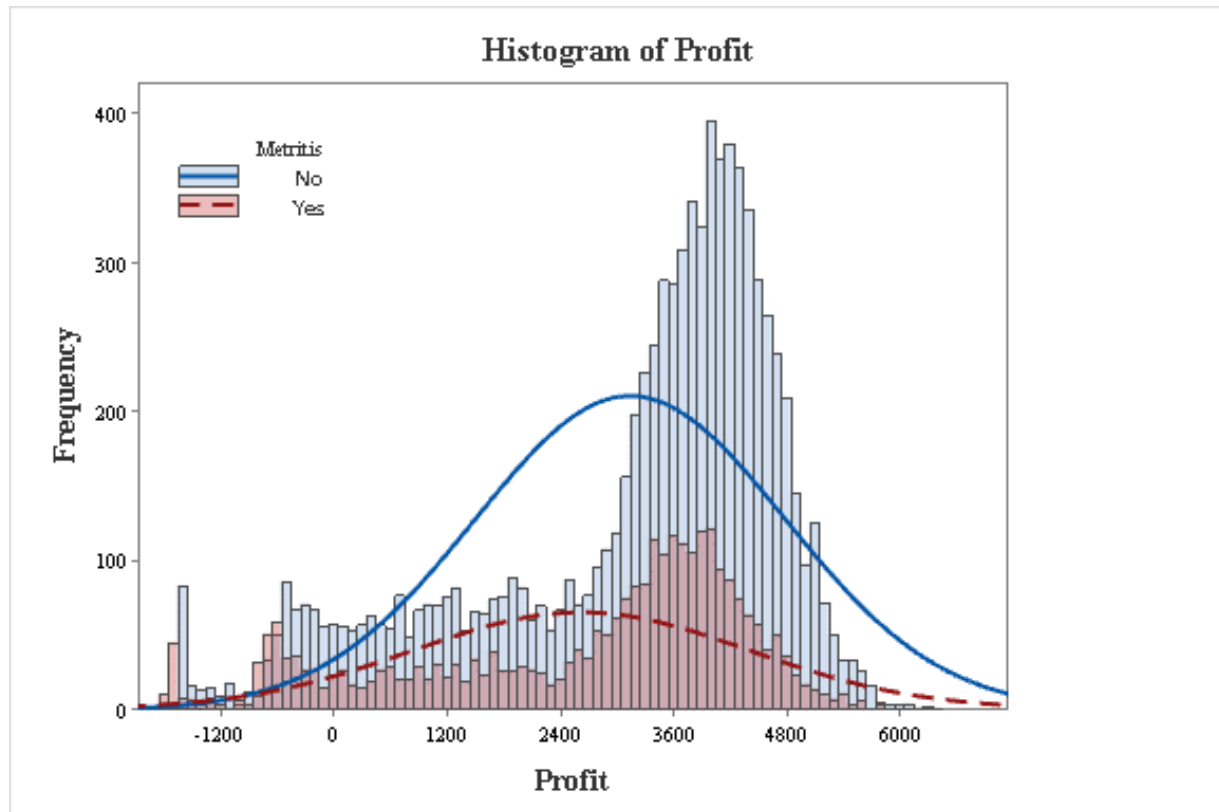
Supplemental Table S2. Mean and type of distribution of the uncertain inputs for the stochastic analysis to calculate the average cost of metritis

Item	Mean	SD	Distribution
Milk price, \$	0.395	0.07	Loglogistic
Replacement cost, \$	1,615.0	259.8	Uniform
Salvage value, \$	1,060.8	108.6	Kumaraswamy
Feed cost, \$	0.265	0.04	Pareto
Cow value, \$	1,334.3	104.7	PERT
Treatment cost, \$	118.6	30.7	Uniform
Reproduction cost, \$	81.3	56.9	Weibull

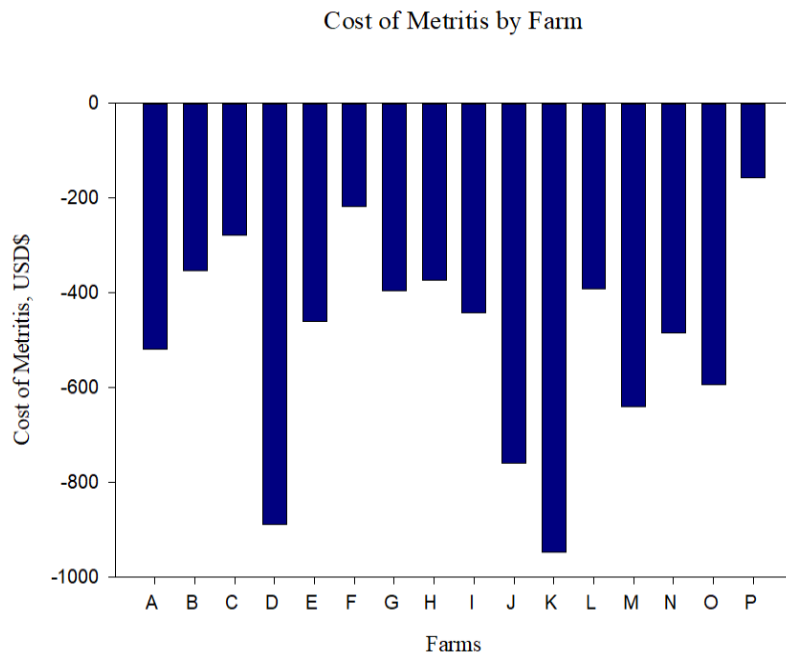
Supplemental Table S3. Milk loss and profit by farm

Farm	Region	¹ Milk Loss, kg	Metritis	No Metritis	² Diff	P-value
A	SE	1065.4	2,504.7	3,024.4	-519.7	<0.01
B	MW	407.0	3,195.2	3,547.6	-352.4	<0.01
C	SW	661.7	2,332.2	2,611.3	-279.1	<0.01
D	SW	1878.5	2,531.4	3,419.7	-888.3	<0.01
E	MW	821.0	2,805.3	3,266.3	-461.0	<0.01
F	MW	345.0	3,388.2	3,605.1	-216.9	<0.01
G	NE	810.9	2,680.4	3,075.6	-395.2	<0.01
H	NE	778.0	3,020.7	3,394.8	-374.1	<0.01
I	NE	883.9	2,665.1	3,107.4	-442.3	<0.01
J	NE	1,175.0	2,622.3	3,380.8	-758.5	<0.01
K	MW	2,212.8	2,144.3	3,091.9	-947.6	<0.01
L	MW	625.0	2,341.0	2,732.5	-391.5	<0.01
M	MW	1,421.5	2,330.6	2,969.7	-639.1	<0.01
N	SW	1005.0	3,006.3	3,490.4	-484.1	<0.01
O	SW	965.4	1,913.3	2,506.8	-593.5	<0.01
P	SW	333.1	2,545.2	2,701.3	-156.1	<0.01

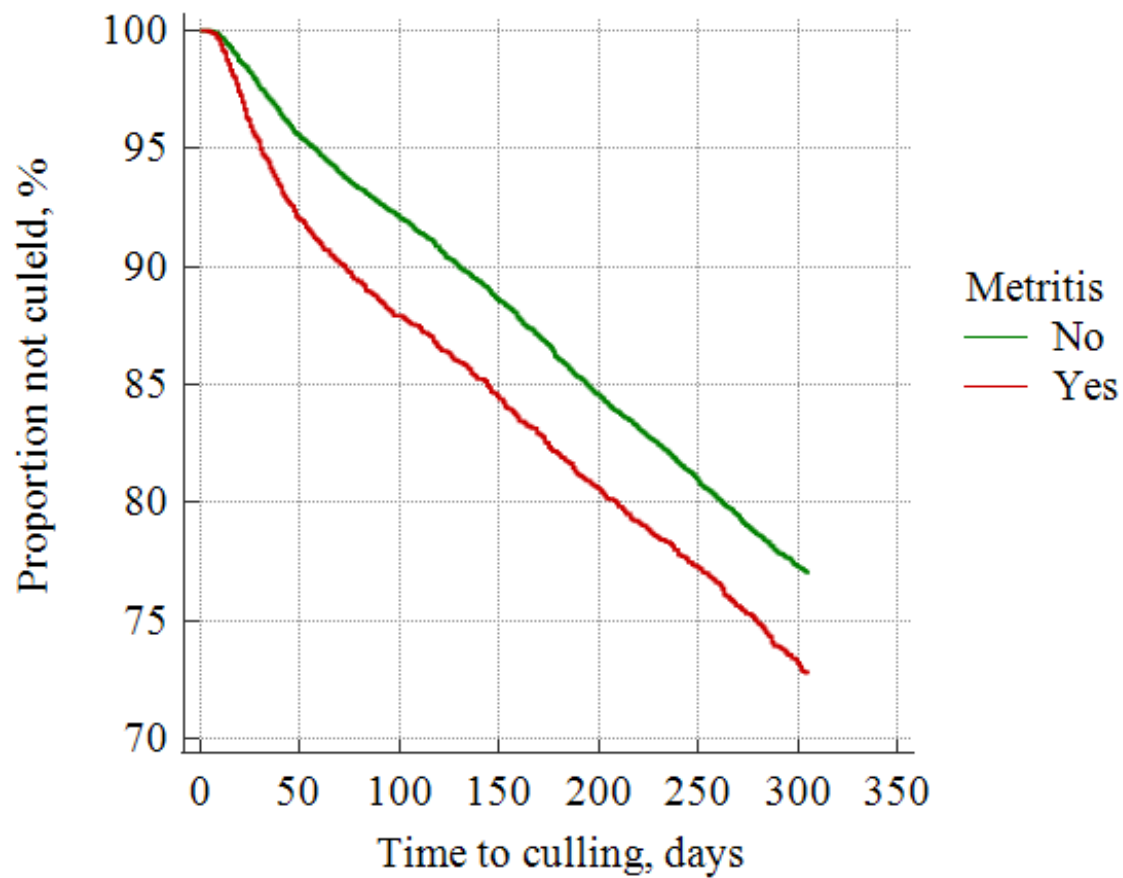
¹Milk loss = Difference in milk production between cows that developed metritis and that did not develop metritis. ²Diff = Difference on profit between cows that developed metritis and cows that did not develop metritis; ³SE = Southeast; ⁴MW = Midwest; ⁵SW = Southwest; ⁶NE = Northeast.



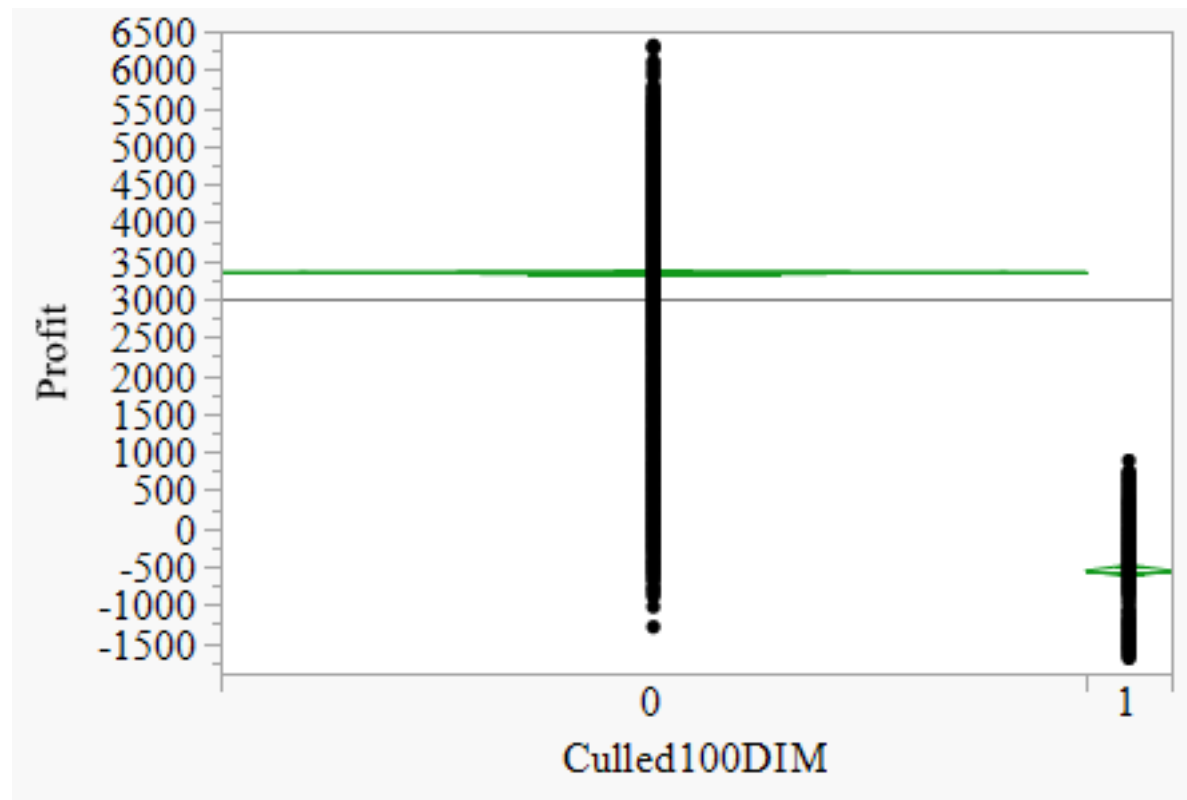
Supplemental Figure S1. Distribution of profit from cows with and without metritis.



Supplemental Figure S2. Cost of metritis by farm. Cost of metritis was calculated by subtracting the profit from cows that experienced metritis from cows that did not have metritis.



Supplemental Figure S3. Kaplan-Meier survival curves for cows with and without metritis.



Supplemental Figure S4. Scatter plot of profit (USD\$/Cow) in cows culled (1) or not culled (0) before 100 DIM. Green lines indicate the means \pm SE.